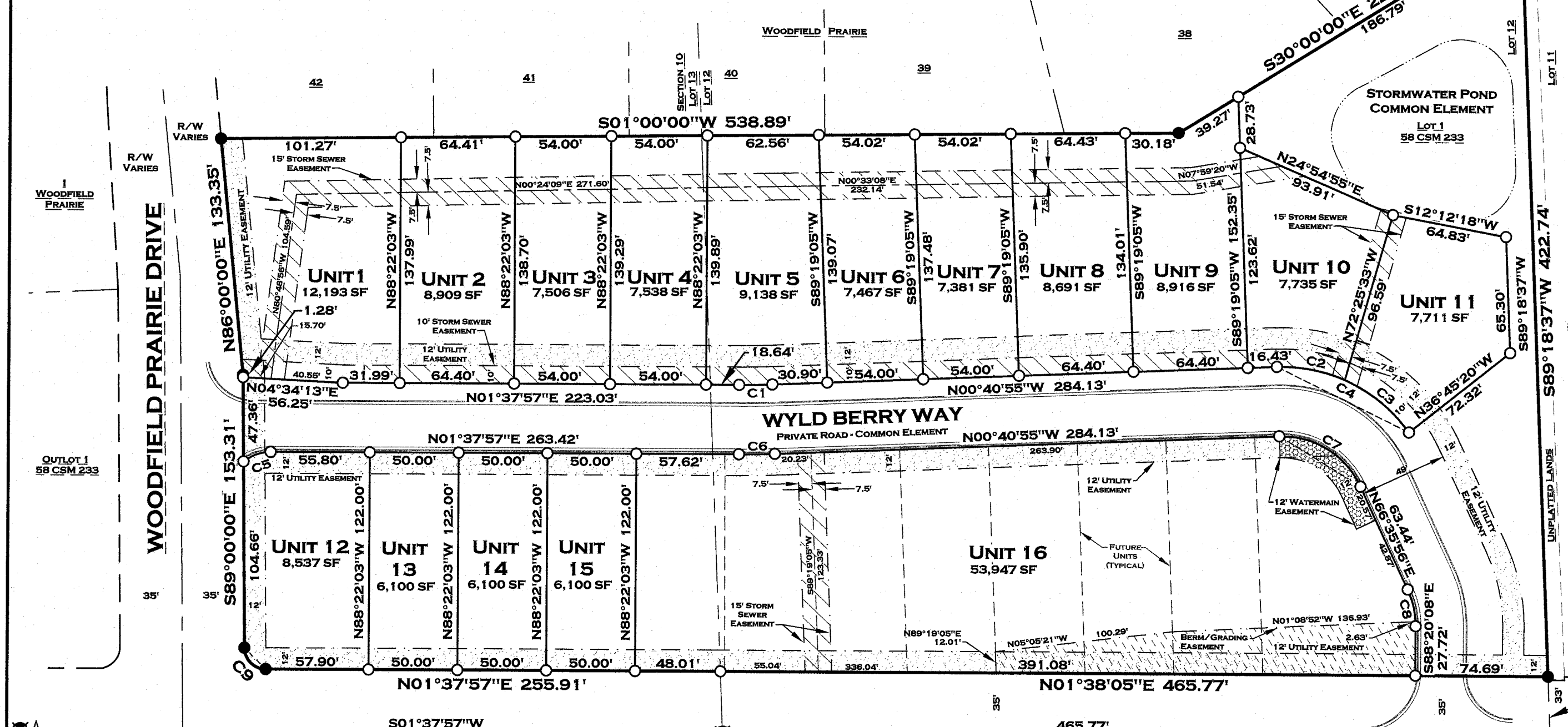


WYLD BERRY CONDOMINIUM, AN EXPANDABLE CONDOMINIUM

ALL OF LOT 1, VOLUME 58 OF CERTIFIED SURVEY MAPS, PAGE 233, MAP NUMBER 8335, DOCUMENT NUMBER 2635366, LOCATED IN PART OF LOT 12 AND LOT 13, SECTION 10, T24N-R19E, VILLAGE OF HOBART, BROWN COUNTY, WISCONSIN

DECLARANT: WYLD BERRY CONDOMINIUM, LLC



TOTAL UNITS
 DECLARED AREA = 16 UNITS
 EXPANDABLE TO A MAXIMUM
 24 UNITS

NOTES
 1. ALL AREAS WITHIN THE CONDOMINIUM AND OUTSIDE THE UNITS, EXCEPT THOSE AREAS DESIGNATED AS LIMITED COMMON ELEMENTS (LCE), ARE COMMON ELEMENTS.
 2. SEE SECTIONS 14.01 & 14.03 IN WYLD BERRY CONDOMINIUM, AN EXPANDABLE CONDOMINIUM DECLARATION FOR EASEMENTS TO THE ASSOCIATION

BROWN COUNTY PLANNING CERTIFICATE

THERE ARE NO OBJECTIONS TO THIS CONDOMINIUM PLAT WITH RESPECT TO SEC. 703.115 Wis. STATS. AND IS HEREBY APPROVED FOR THE BROWN COUNTY PLAN COMMISSION.

DATED THIS 1st DAY OF August, 2019.

Terry VanHout
TERRY VANHOUT, BROWN COUNTY PROPERTY LISTER

SURVEYOR'S CERTIFICATE:

I, TROY E. HEWITT, PROFESSIONAL LAND SURVEYOR, DO HEREBY CERTIFY THAT IN ACCORDANCE WITH STATE STATUTE 703 THAT I HAVE SURVEYED THE WITHIN DESCRIBED PROPERTY AND THAT THE SURVEY IS AN ACCURATE REPRESENTATION OF THE EXTERIOR BOUNDARY AND UNITS THEREOF.

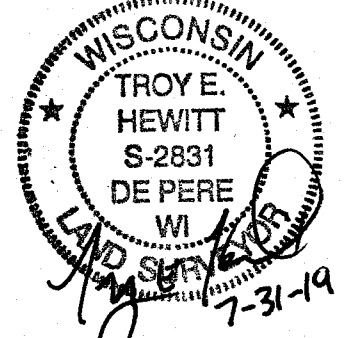
THIS CONDOMINIUM PLAT IS A CORRECT REPRESENTATION OF THE WYLD BERRY CONDOMINIUM, AN EXPANDABLE CONDOMINIUM, AT THE DATE HEREOF, AND THE IDENTIFICATION AND LOCATION OF EACH UNIT AND THE COMMON ELEMENTS CAN BE DETERMINED FROM THE PLAT.

DATED THIS 31st DAY OF July, 2019.

Troy E. Hewitt
TROY E. HEWITT, PLS #2831
PROFESSIONAL LAND SURVEYOR
ROBERT E. LEE & ASSOCIATES, INC.

2868563
 VOLUME: 6
 PAGE: 236-237
 CHERYL BERKEN
 BROWN COUNTY RECORDER
 GREEN BAY, WI
 RECORDED ON
 08/01/2019 02:22 PM
 REC FEE: 50.00
 PAGES: 2

EAST 1/16 CORNER OF THE SOUTHEAST 1/4 SECTION 10, T24N-R19E MAG NAIL WITH ID WASHER
 EAST 1/4 CORNER SECTION 10, T24N-R19E MAG NAIL WITH ID WASHER
 NORTH 1/16 CORNER ON EAST LINE OF SECTION 10, T24N-R19E MAG NAIL WITH ID WASHER



NORTH OVERLAND ROAD

HOBART MARKETPLACE, A COUNTY PLAT

LEGEND

- SET 1" X 18" IRON PIPE WEIGHING 1.13 LBS./LIN. FT.
- EXISTING 1" IRON PIPE
- ☒ RECORDED COUNTY MONUMENT

CURVE TABLE

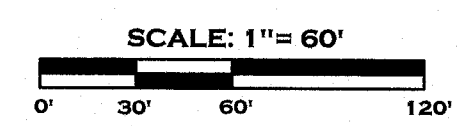
CURVE #	DELTA	RADIUS	LENGTH	CHORD	CHORD DIRECTION	TANGENT BEARING	SECOND TANGENT BEARING
C1	2°18'52"	462.00'	18.66'	18.66'	N00°28'31"E	N01°37'57"E	N00°40'55"W
C2	25°44'48"	87.50'	39.32'	39.32'	S12°11'29"W	S25°03'54"W	S00°40'55"E
C3	30°48'15"	87.50'	47.07'	46.50'	S40°28'31.5"W	S55°53'09"W	S25°03'54"W
C4	56°34'03"	87.50'	86.39'	82.92'	S27°36'07.5"W	S55°53'09"W	S00°40'55"E
C5	39°28'26"	24.00'	16.53'	16.21'	S18°06'16"E	S01°37'57"W	S37°50'28"E
C6	2°18'52"	501.00'	20.24'	20.24'	N00°28'31"E	N01°37'57"E	N00°40'55"W
C7	67°16'50"	48.50'	56.95'	53.74'	S32°57'30"W	S66°35'56"W	S00°40'55"E
C8	25°03'57"	49.00'	21.44'	21.27'	S79°07'54.5"W	N88°20'08"W	S66°35'56"W
C9	89°22'03"	12.00'	18.72'	16.88'	S49°18'58.5"W	S89°00'00"E	N01°37'57"E

LEGAL DESCRIPTION

ALL OF LOT 1, VOLUME 58 OF CERTIFIED SURVEY MAPS, PAGE 233, MAP NUMBER 8335, DOCUMENT NUMBER 2635366, LOCATED IN LOT 12 AND LOT 13, SECTION 10, T24N-R19E, VILLAGE OF HOBART, BROWN COUNTY, WISCONSIN.

SAID PARCEL CONTAINS 232,408 SQUARE FEET (5.334 ACRES) OF LAND MORE OR LESS. PARCEL SUBJECT TO EASEMENTS AND RESTRICTIONS OF RECORD.

ROBERT E. LEE & ASSOCIATES, INC.
 ENGINEERING, SURVEYING, ENVIRONMENTAL SERVICES
 1250 CENTENNIAL CENTRE BLVD.
 HOBART, WI 54155
 INTERNET: WWW.RELEINC.COM PHONE: (920) 662-9641 FAX: (920) 662-9141



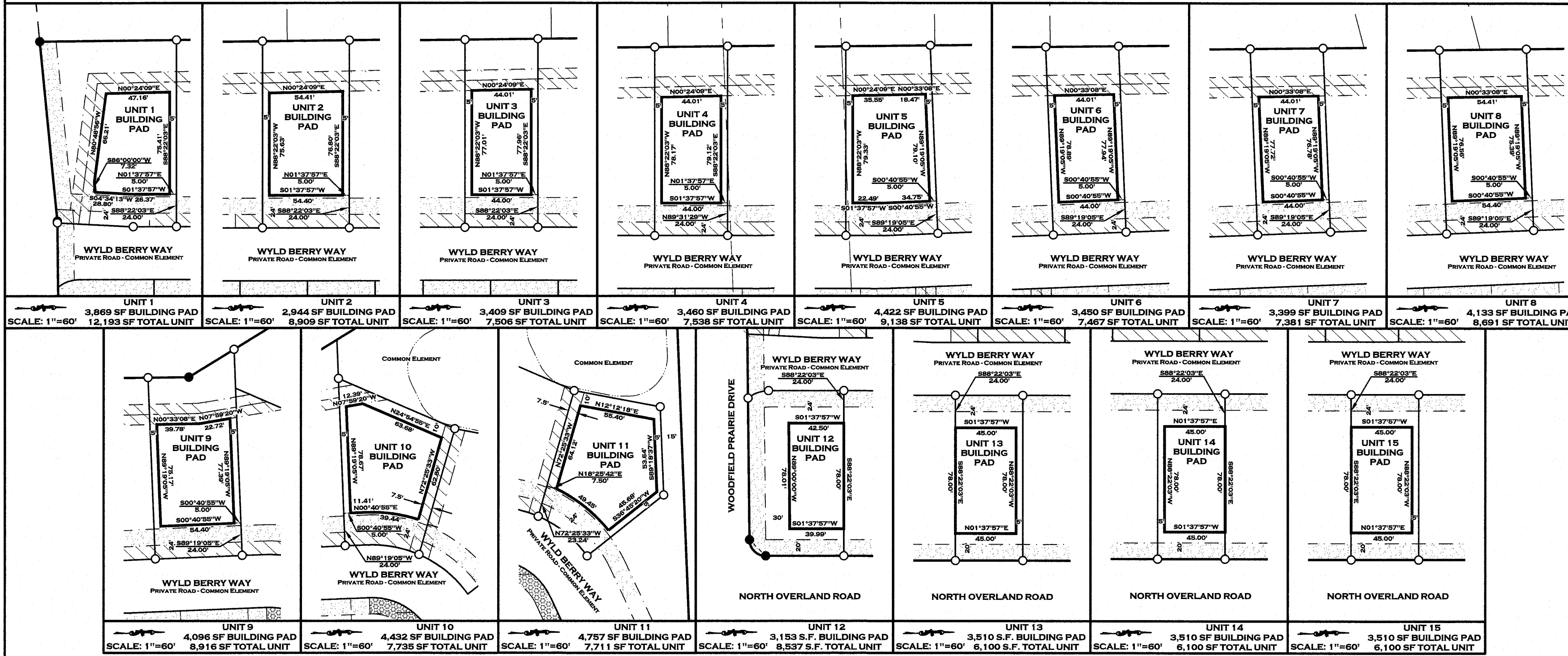
BEARINGS ARE REFERENCED TO THE BROWN COUNTY COORDINATE SYSTEM. THE NORTH LINE OF LOT 1, 58 CSM 233 RECORDED TO BEAR S89°18'37"W.

WYLD BERRY CONDOMINIUM, AN EXPANDABLE CONDOMINIUM

ALL OF LOT 1, VOLUME 58 OF CERTIFIED SURVEY MAPS, PAGE 233, MAP NUMBER 8335, DOCUMENT NUMBER 2635366, LOCATED IN PART OF LOT 12 AND LOT 13, SECTION 10, T24NR19E, VILLAGE OF HOBART, BROWN COUNTY, WISCONSIN



DECLARANT: WYLD BERRY CONDOMINIUM, LLC



SHEET 2 OF 2

ROBERT E. LEE & ASSOCIATES, INC.
 ENGINEERING, SURVEYING, ENVIRONMENTAL SERVICES
 1250 CENTENNIAL CENTRE BLVD.
 HOBART, WI 54155 PHONE: (920) 662-9641
 INTERNET: WWW.RELEINC.COM FAX: (920) 662-9141